

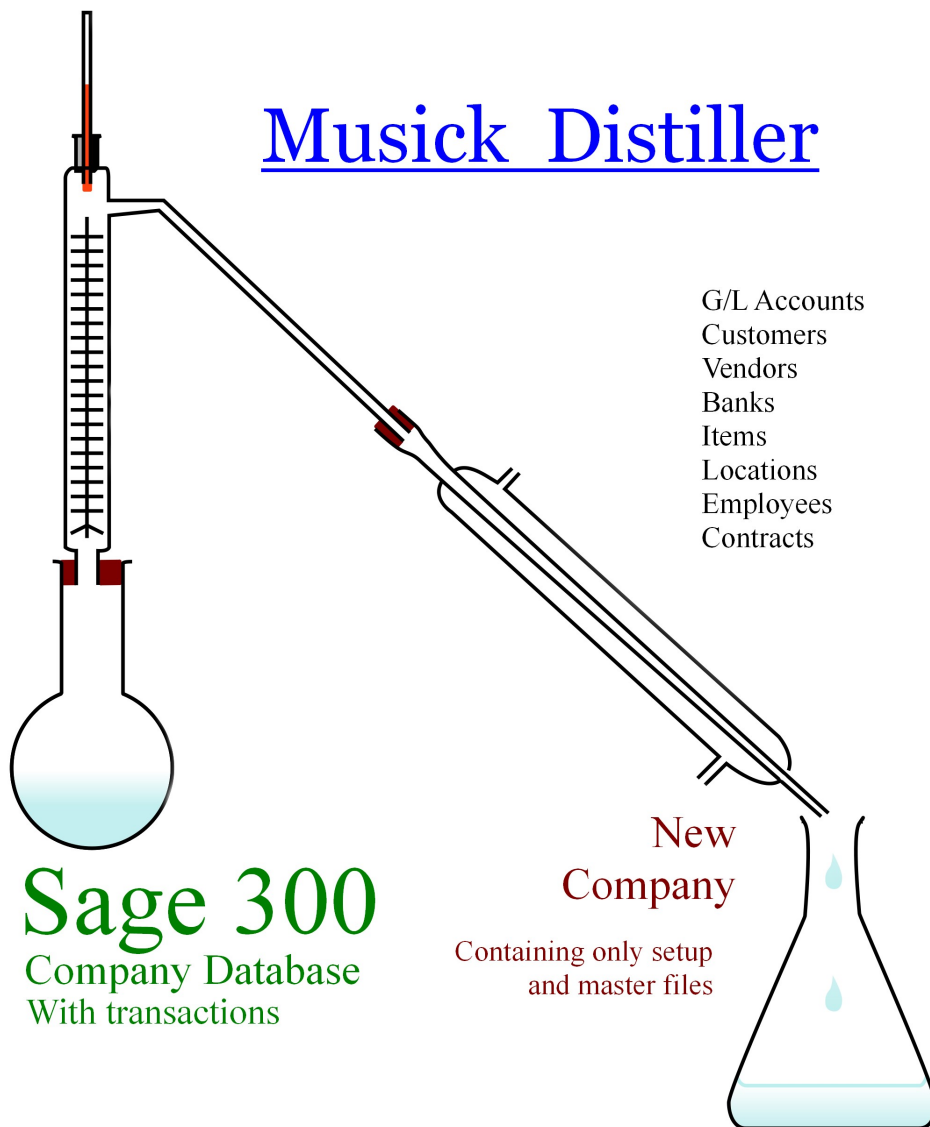
# Distiller Utility



By Musick International, Inc.

## Overview

Need to create a new Sage 300 company, but would like to use the setup information from an existing company? The Distiller Utility will do exactly that. The Distiller Utility creates a database dump from a Sage 300 database. These dump files will contain only the minimum required setup files to create a duplicate company. It will not contain any of the transactions from the original company database.



Save time creating and configuring a new company!

Why re-enter.....

- ✓ General Ledger options, chart of accounts, source codes, segment codes, revaluation codes
- ✓ Common Services banks, taxes, schedules
- ✓ AP & AR options, account sets, distributions, terms, payment codes
- ✓ IC options, item structures, segment codes, categories, account sets, price list codes, units of measure
- ✓ OE options, templates, miscellaneous charges, ship-via codes
- ✓ PO options, ship-via codes, templates, additional costs
- ✓ PJC options, cost types, contract structures, segment codes, account sets, projects, categories, equipment
- ✓ Payroll options, EFT options, class codes, earnings and deductions, workers' compensation codes, overtime schedules
- ✓ Optional Fields that are defined for the entire company

.....let the Distiller do all the work for you!

### **Compatibility**

Musick International products are compatible with current and recent versions of Sage 300. To verify compatibility to Sage 300 and third party products, please check our website ([www.Musick-Int.com](http://www.Musick-Int.com)) or email [Sales@Musick-Int.com](mailto:Sales@Musick-Int.com). All of the core modules are supported: Accounts Payable, Accounts Receivable, General Ledger, Inventory Control, Order Entry, Purchase Orders, Project Job Costing and both US and Canadian Payroll.

### **Installation**

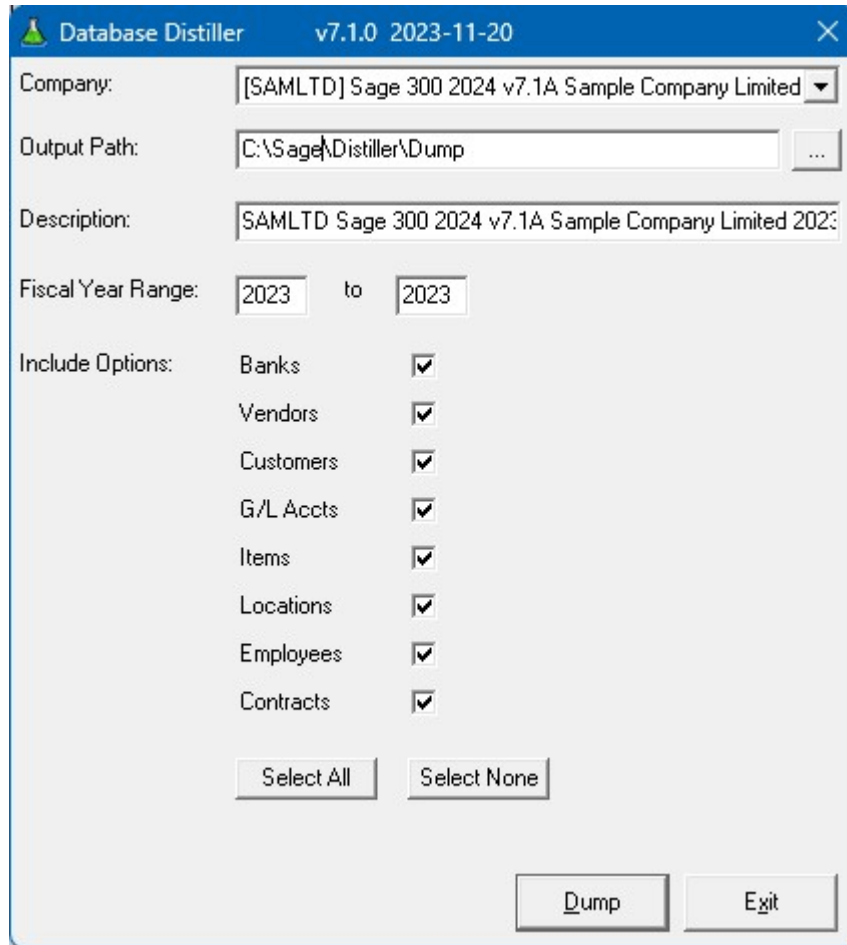
Download and install the latest release of either FixIT or DataCHECK. In the folder where FixIT is installed (default is C:\FixITcc), run the install program "DistillerInstall.exe". We recommend running the install and application using "Run as Administrator".

### **Connect FixIT or DataCHECK**

The Distiller requires the database connection to be created in FixIT or DataCHECK. Start FixIT and verify the connection to the company. If the company is not listed on the "Validate" screen, select the "Locate" icon on the left toolbar. Change to "Locate Data using FixIT Path" as the default and click "New" to add a new connection to the company database. "Apply" the changes and verify the database is available.

## Running Distiller

Before running the Distiller, verify the company database is available in FixIT. Launch the Distiller.exe from “Start” – “Programs” – “Musick International, Inc” – “Distiller”.



Select the company from the drop down list at the top of the screen. If your company is not in the list, verify the company database is available in FixIT or DataCHECK.

Specify the “Output Path” for the dump files. This folder will contain the distilled company in the format of a Sage 300 dump.

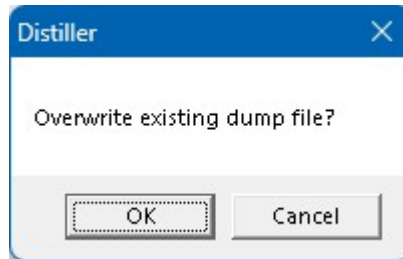
The “Fiscal Year Range” allow you to specify which fiscal years to include in the distilled company. The range must be within the current fiscal calendar. General Ledger requires at least one fiscal year. All amounts for every account will be zero for these year(s). No transactions are transferred to the output dump files.

The “Include Options” will allow selection of master files that will be included in the distilled dump files. The distilled dump will contain the basic setup for each module. These options allow you to further define what information to retain during distilling.

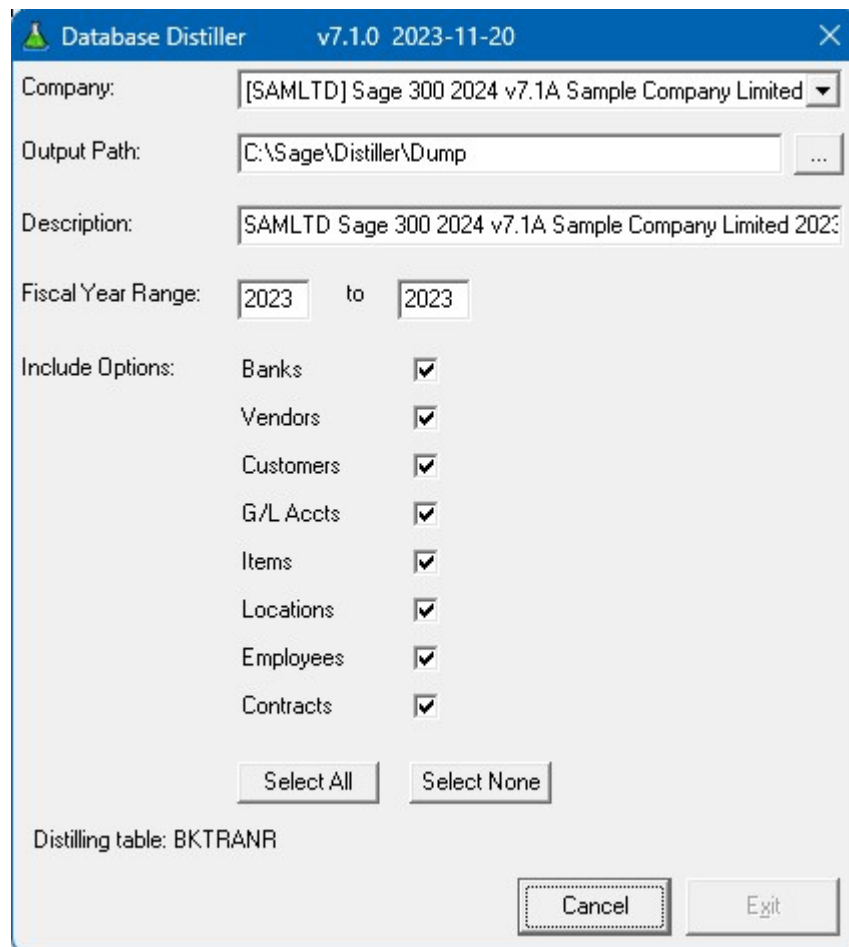
For example, to exclude the customer list from the distilled company, un-check the box next to “Customers”.

Once selection is complete, click "Dump" to extract and distill the new company database.

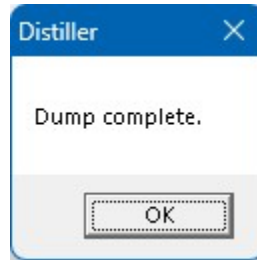
If the “Output Path” contains a previous dump, you will receive a prompt to overwrite the files.



The “Distiller” will spin through the database and extract all the required settings plus the master files selected.



Once the process has completed, the following message will display:



This dump can now be loaded into a new Sage 300 company database. The dump folder can be used multiple times to quickly create and initialize a new company.

### **Verify the Database**

There are factors (such as data corruption) beyond the control of the Distiller. We do our best to anticipate and trap various issues, but a quick validation of the Sage 300 data will ensure the new company was created as specified. Run the Sage 300 Data Integrity Check as well as various reports to verify the accuracy of the database.



Thank You for selecting Musick International, Inc.

Support@Musick-Int.com

719-395-4124

[www.Musick-Int.com](http://www.Musick-Int.com)

Copyright 2025 Musick International, Inc.

FixIT™ is a registered trademark of Musick International, Inc.