



Location Change Utility

By Musick International, Inc.

Overview

The Location Change Utility allows you to change Sage Inventory Control Location Codes throughout the Sage 300 database. Other modules updated by this utility include Inventory Control, Order Entry, Purchase Orders, Project Job Cost and Accounts Receivable.

Please contact Musick International, Inc. for compatibility to third party products.

Compatibility

Musick International products are compatible with current and recent versions of Sage 300. To verify compatibility to Sage 300 and third party products, please check our website (www.Musick-Int.com) or email Sales@Musick-Int.com.

Requirements

The Location Change Utility requires DataCHECK or FixIT. If you do not own DataCHECK or FixIT, contact Musick International, Inc. for your complimentary activation code for DataCHECK.

Installation

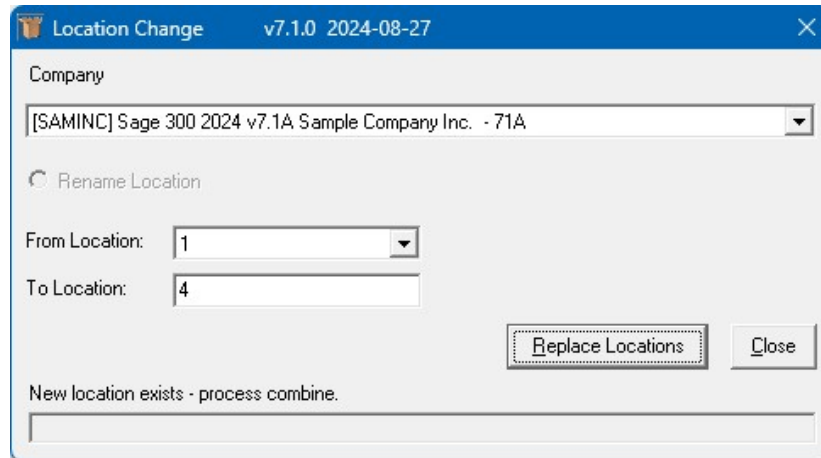
Download and install the latest release of either FixIT or DataCHECK. In the folder where FixIT or DataCHECK is installed (default is C:\FixITcc), run the install program "LocationChangeInstall.exe". We recommend running the install using "Run as Administrator".

Connect FixIT or DataCHECK

The Location Change Utility uses FixIT or DataCHECK for connection to the company database. If the database has not yet been defined, start FixIT/DataCHECK and verify the connection to the company. If the company is not listed on the “Validate” screen, select the “Locate” icon on the left toolbar, change to “Locate Data” using “FixIT Path” as the default, and click “New” to add a new connection to the company database. “Apply” the changes and verify the database is available.

Starting Location Change Utility

Launch the LocationChange.exe from “Start” – “Programs” – “Musick International, Inc” – “Location Change”. The utility’s main window looks like this:



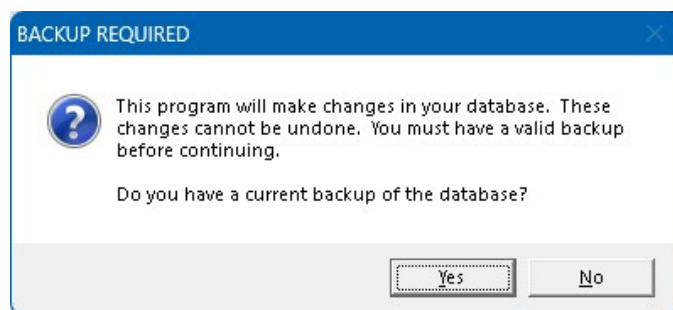
Select the company from the drop down list. If the company is not in the list, refer to “Connect FixIT or DataCHECK” above.

Change Location Code

Select the location to change in the “From Location” field. Enter the desired location code in the “To Location” field. The location code field has a maximum of 6 characters that may contain upper case letters or numbers. Spaces and special characters are not allowed. Note: invalid special characters will automatically be removed: - * . \ / () #

Entering a “To Location” that does not exist, all “From Locations” will be renamed to the “To Location” code. If a “To Location” does exist, the two locations will be combined. Totals contained in “Location Details”, “Sales Statistics” and “Purchase Order History” are combined into the “To Location”. When combining locations, all stock transfers involving both the “From Location” and “To Location” are removed.

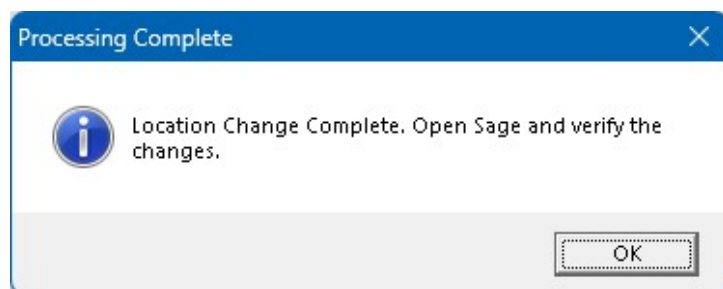
Click on the “Replace Location” button and this screen will be displayed:



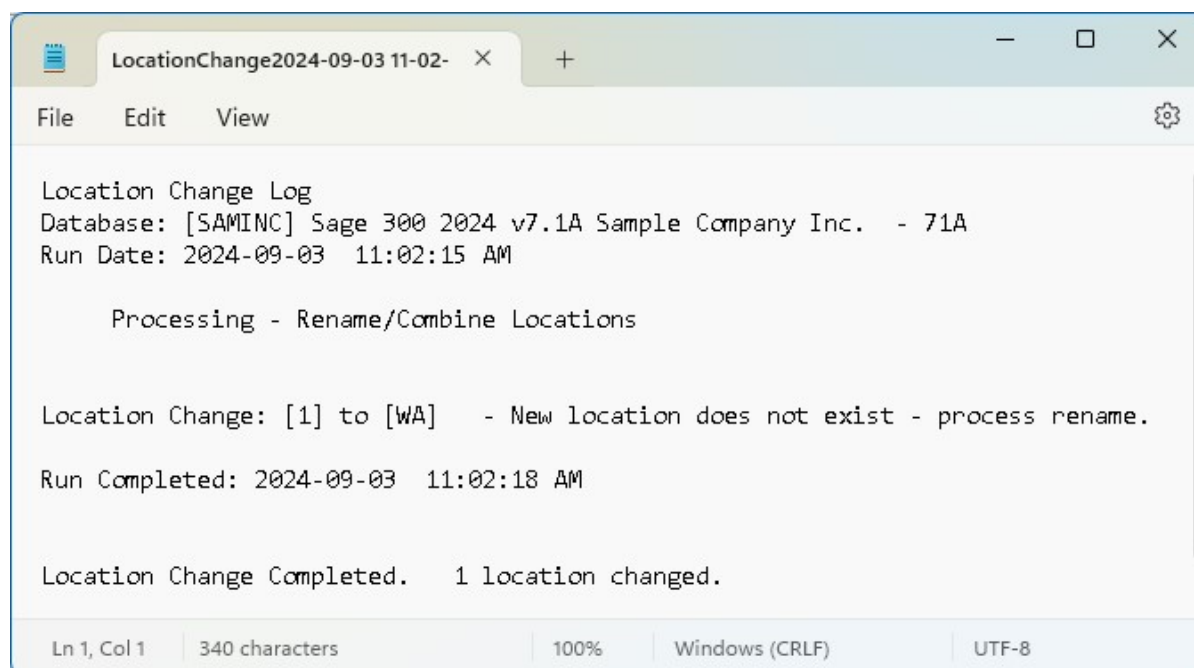
Make sure to have a backup of the data before changing Location codes. If you have a backup, click “Yes”.

Log File

Location Change will spin through the database and make all the required changes. Once the process has completed, this screen is displayed:



Clicking “OK” will display Notepad and the log file with the results of the process.



The Location Change log file is located where the “Location Change” program is installed. The log file name will be similar to “LocationChange - [SAMLDT] Sample Data 2022330 - 101759.LOG.”

Examine the log file to confirm that the Location code was changed successfully. When complete, we recommend running Sage Data Integrity.



Thank you for selecting Musick International, Inc.

Support@Musick-Int.com

719-395-4124

www.Musick-Int.com

Copyright 2025 Musick International, Inc.

FixIT™ is a registered trademark of Musick International, Inc.